

Technical Data Sheet

CODE 16256

CA IL 200

Compact flat in-line centrifugal fans



Certifications

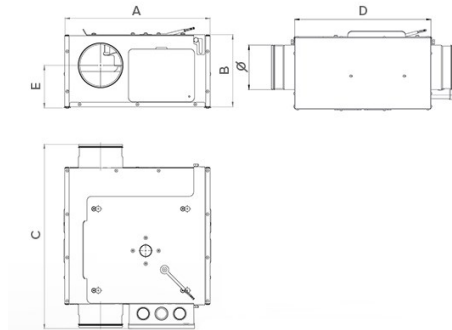
CE CE

EAC EAC

TECHNICAL AND PERFORMANCE DATA

Frequency (Hz)	50	Number of speeds	3
Insulation class	I°	Voltage (V)	230
Max ambient temperature for continuous operation (°C)	40	Weight (Kg)	9,4
Motor ATEX marking	44	Breakout sound power LWA [dB(A)]	62
Motor class	F	Max airflow (l/s)	231
Nominal current at Max speed (A)	0,61	Max airflow (m³/h)	830
Nominal current at Min speed (A)	0,47	Max pressure (mmH2O)	55,3
Nominal diameter (mm)	200	Max pressure (Pa)	550
Nominal power at Max speed (W)	140	Sound power at exhaust inlet LWA [dB(A)]	71
Nominal power at Min speed (W)	50	Sound power at supply outlet LWA [dB(A)]	78

DIMENSIONS



Ø (mm)	200
Size A (mm)	390
Size B (mm)	238
Size C (mm)	468,5
Size D (mm)	372
Size E (mm)	118

PER INFORMAZIONI / FOR INFORMATION

ITALY

Pre Sales:
prevendita@vortice-italy.com
After Sales:
postvendita@vortice-italy.com

UNITED KINGDOM & REP. OF

IRELAND
Sales Dept:
sales@vortice.ltd.uk
Technical Dept:
technical@vortice.ltd.uk

OTHER COUNTRIES

Sales Dept:
export@vortice-italy.com
After Sales:
after-sales@vortice-italy.com

Technical Data Sheet

CODE 16256

CA IL 200

Compact flat in-line centrifugal fans



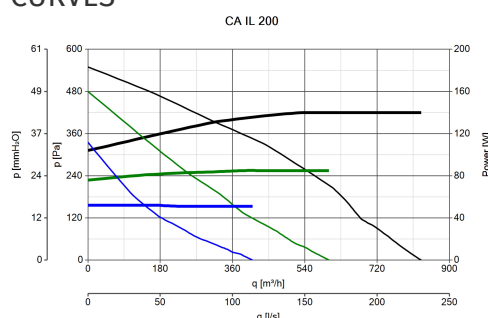
DESCRIPTION

- Casing and motor-support made of galvanized sheet steel; lined internally with PE sound-proof panel (thickness 10 mm).
- Circular spigots for connection to standard tubes, equipped with double lip rubber seal for perfect air tightness.
- Nominal diameter: 200 mm.
- External rotor AC motorfan, with shaft turning in ball bearings, coupled to a backward curved centrifugal impeller.
- Galvanized steel sheet brackets, directly coupled to casing.
- Electric connection box accomodating capacitors, molded with shock-proof plastic resin resistant against aggressive agents, integrating cable

cages and cable glands to ensure high protection (IP55) against dust and water.

- 3 alternative installation: wall, ceiling and false-ceiling.
- Easy maintenance: motor is directly fixed to the cover, in turn hinged to the casing, allowing easy external rotation and motorfan direct access.
- Protection against dust and water: IP44.
- Electric insulation class: I (grounding is required).

CURVES



ACCESSORIES



TRA 250
(TELAIO CON
RETE ANTINF.)

Code 51150



PGR 250
(PERSIANA
GRAVITA')

Code 50150



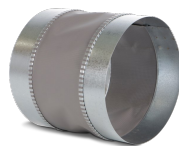
C 1.5
(COMANDO EL.
1.5 A)

Code 12966



GR 200

Code 21181



FS 200

Code 21186



TRIO D

Code 12866



IREM D

Code 12867

PER INFORMAZIONI / FOR INFORMATION

ITALY

Pre Sales:
prevendita@vortice-italy.com
After Sales:
postvendita@vortice-italy.com

UNITED KINGDOM & REP. OF

IRELAND
Sales Dept:
sales@vortice.ltd.uk
Technical Dept:
technical@vortice.ltd.uk

OTHER COUNTRIES

Sales Dept:
export@vortice-italy.com
After Sales:
after-sales@vortice-italy.com